



FITTING INSTRUCTIONS FOR AB0047BK ADVENTURE BARS
KAWASAKI Z125 2019



THIS KIT CONTAINS THE ITEMS PICTURED AND LABELLED BELOW.
DO NOT PROCEED UNTIL YOU ARE SURE ALL PARTS ARE PRESENT.

Please note that the way the kit is packed does not necessarily represent the way of mounting to the bike
Please note that in cases where kits are packed with rubber washers holding the components onto the bolt – *the rubber washers should be thrown away!*

THE PARTS SHOWN MAY BE REPRESENTATIVE ONLY (FOR CLARITY OF INSTRUCTIONS ONLY)

Digital copies of these instructions are available to download from www.rg-racing.com

GENERAL TORQUE SETTINGS

M4 BOLT = 8Nm
M5 BOLT = 12Nm
M6 BOLT = 15Nm
M8 BOLT = 20Nm
M10 BOLT = 40Nm
M10 NUT = 40Nm

TOOLS REQUIRED

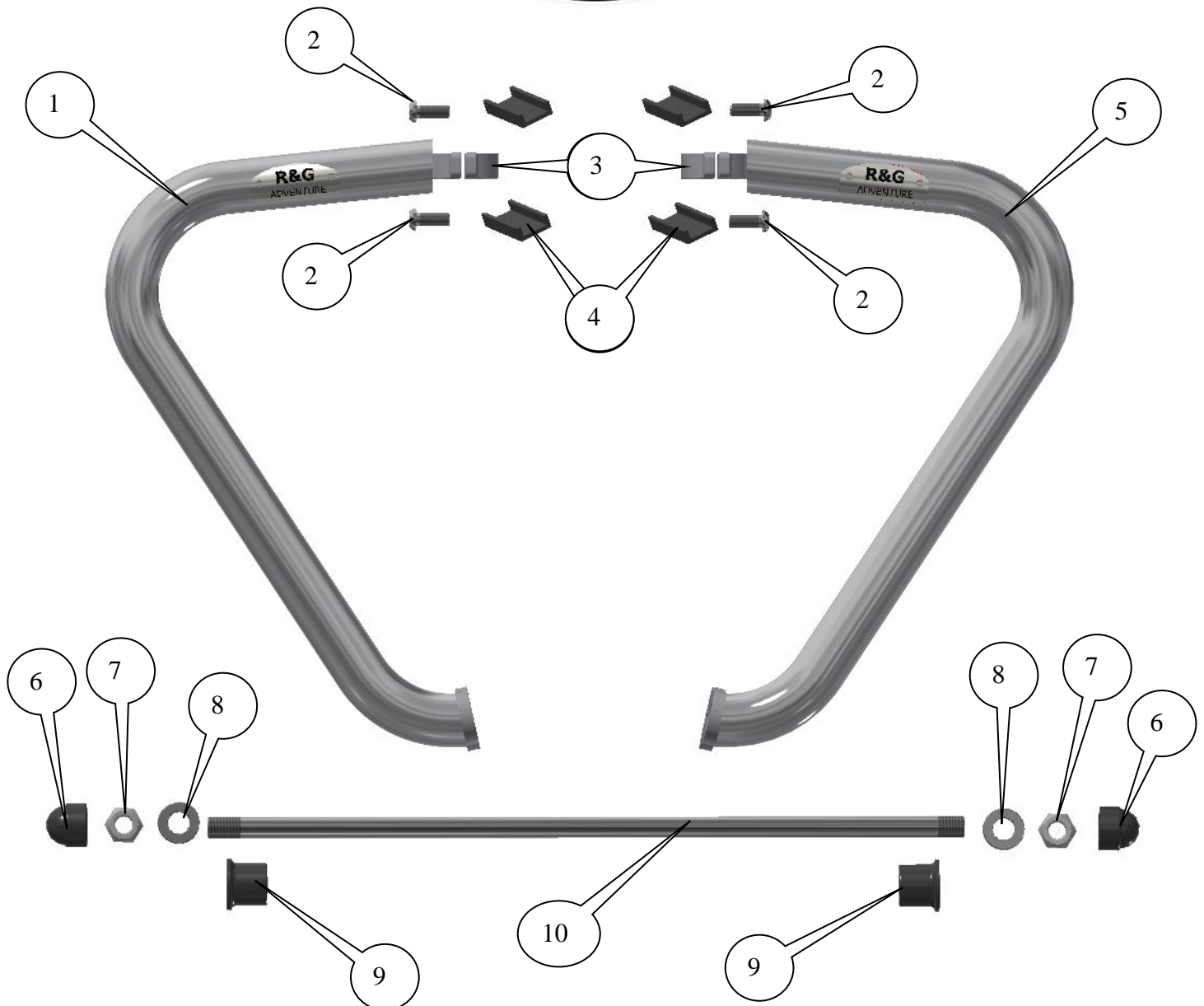
- Socket set to include 14 and 17mm A/F sockets and wrench.
- Set of Allen keys to include 4mm A/F (or socket bit and wrench).
 - Torque wrench (up to 40Nm).
 - Soft faced mallet.
 - Frame support (jack).
 - Block of soft wood.
- Small amount of superglue or similar adhesive.

R&G

Unit 1, Shelley's Lane, East Worldham, Alton, Hampshire, GU34 3AQ
Tel: +44 (0)1420 89007 Fax: +44 (0)1420 87301 www.rg-racing.com Email: info@rg-racing.com



AB0047

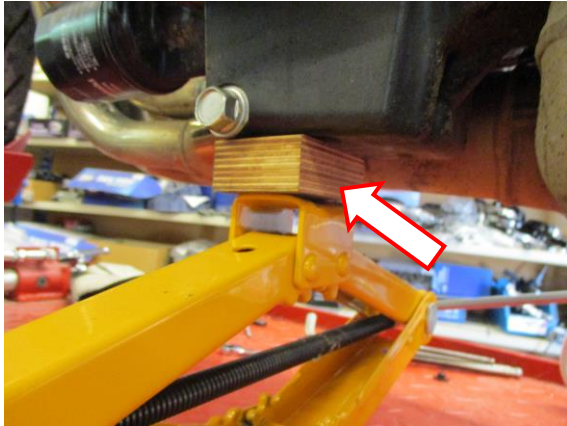
**LEGEND**

- ITEM 1 = ADVENTURE BAR RIGHT-HAND SIDE (AB0047 RHS ASSY) (x1).
 ITEM 2 = M6x1x15mm LONG BUTTON HEAD BOLTS (x4).
 ITEM 3 = ADVENTURE BAR FRAME CLAMP (F0050) (x1).
 ITEM 4 = 40mm LENGTHS OF RUBBER U CHANNEL (x4).
 ITEM 5 = ADVENTURE BAR LEFT-HAND SIDE (AB0047 LHS ASSY) (x1).
 ITEM 6 = M10 NUT COVERS (NC0004) (x2).
 ITEM 7 = M10x1.5 NYLOC NUTS (x2).
 ITEM 8 = M10 WASHERS (x2).
 ITEM 9 = SPACERS LEFT AND RIGHT=HAND SIDE (S1173=519mm LONG).
 ITEM 10 = ENGINE BAR (EB097=M10x358mm LONG) (x1).

R&G

Unit 1, Shelley's Lane, East Worldham, Alton, Hampshire, GU34 3AQ

Tel: +44 (0)1420 89007 Fax: +44 (0)1420 87301 www.rg-racing.com Email: info@rg-racing.com



PICTURE 1



PICTURE 2



PICTURE 3



PICTURE 4



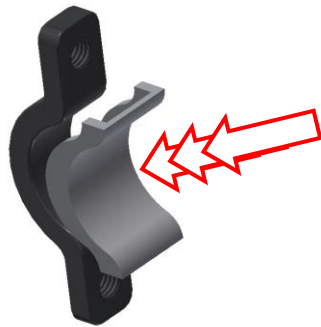
PICTURE 5



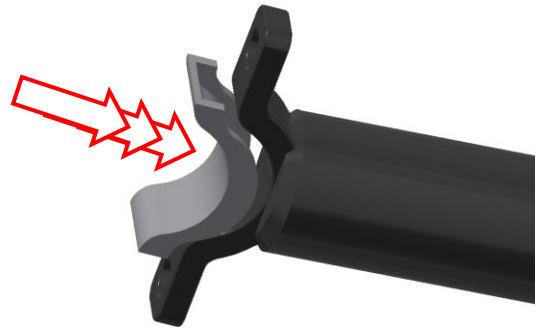
PICTURE 6



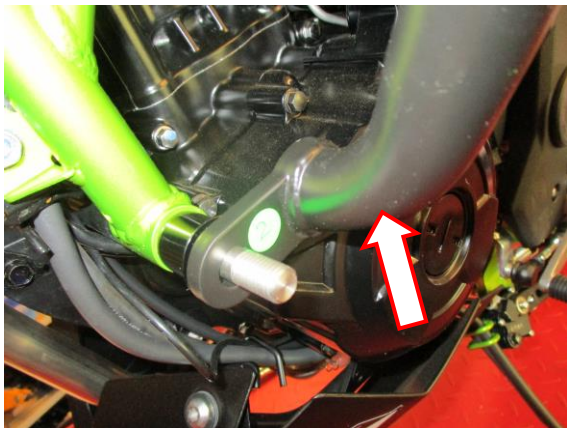
AB0047



PICTURE 7



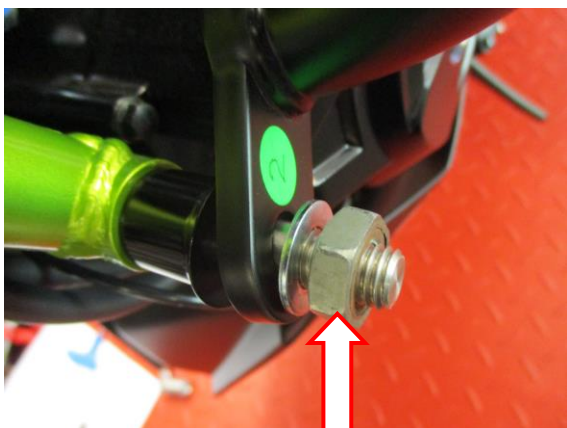
PICTURE 8



PICTURE 9



PICTURE 10

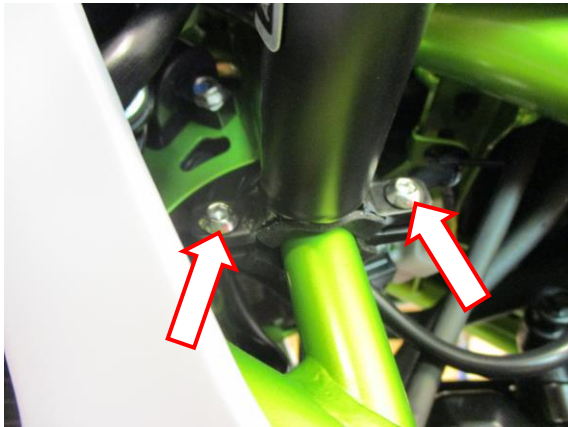


PICTURE 11



PICTURE 12





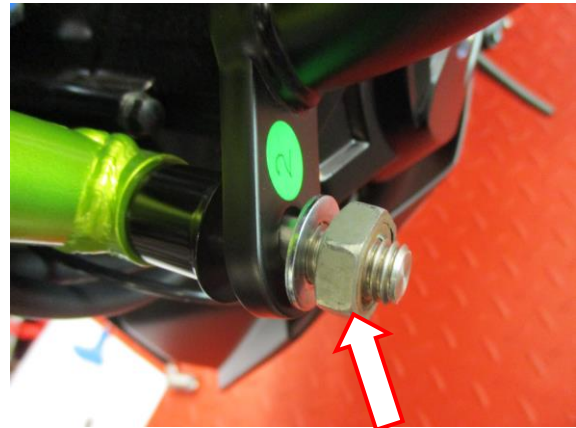
PICTURE 13



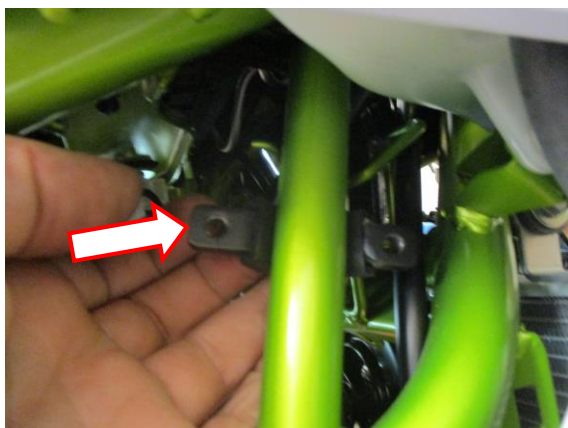
PICTURE 14



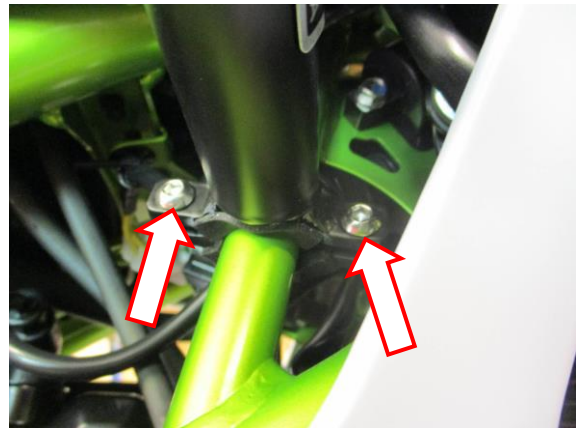
PICTURE 15



PICTURE 16



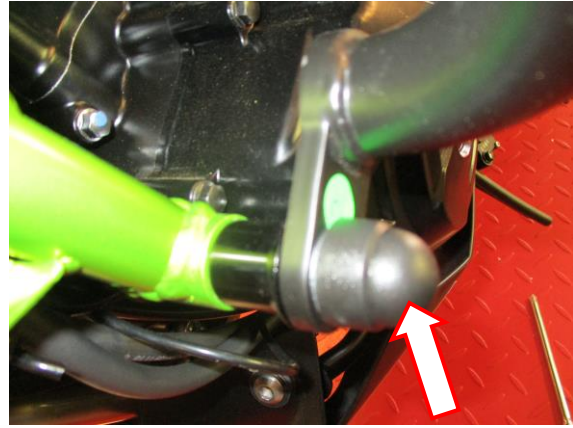
PICTURE 17



PICTURE 18



PICTURE 19



PICTURE 20

FITTING INSTRUCTIONS

- It is advisable to support the engine as shown in **picture 1** to prevent any engine movement when the original engine bolt is loosened/removed (do not use excessive force as damage can occur).

Off side (right side as you sit on the motorcycle)

- Remove the nut arrowed in **picture 2** using a 14mm socket or spanner.
- Remove the original engine bolt (you may have to use the new engine bar (**item 10**) with a soft faced mallet to drift the original bolt out) as shown in **pictures 3 and 4** (please ensure the original engine spacers remain in position), leave approximately equal amounts protruding from either side of the frame.
- Place one of the spacers (**item 9**) onto the exposed ends of the engine bar as shown in **pictures 5 and 6**.
- Cut and stick the four rubber U channel sections (**item 3**) to the frame clamping surfaces as shown in **pictures 7 and 8**.

Near side (left side as you sit on the motorcycle)

- Place the left-hand side adventure bar (**item 5**) onto the exposed end of the engine bar on the left-hand side as shown in **picture 9**.
- Place one of the M10 washers (**item 8**) onto the exposed end of the engine bar as shown in **picture 10**.
- Place one of the M10 nuts (**item 7**) onto the exposed end of the engine bar as shown in **picture 11** (please fully engage the nut but do not tighten at this stage).
- Position one of the frame clamps (**item 3 with item 4 glued in position**) onto the frame member as shown in **picture 12**.
- Position the adventure bar as shown in **picture 13** and secure using two of the M6 button headed bolts (**item 2**) do not fully tighten at this stage.

Off side (right side as you sit on the motorcycle)

- Place the right-hand side adventure bar (**item 1**) onto the exposed end of the engine bar on the right-hand side as shown in **picture 14**.
- Place one of the M10 washers (**item 8**) onto the exposed end of the engine bar as shown in **picture 15**.
- Place one of the M10 nuts (**item 7**) onto the exposed end of the engine bar as shown in **picture 16** (please fully engage the nut but do not tighten at this stage).
- Position one of the frame clamps (**item 3 with item 4 glued in position**) onto the frame member as shown in **picture 17**.
- Position the adventure bar as shown in **picture 13** and secure using two of the M6 button headed bolts (**item 2**) do not fully tighten at this stage.
- Finally tighten the two engine bar nuts and then the four button head bolts.
- Fit the nut covers (**item 6**) to both nuts as shown in **pictures 19 and 20**.

R&G



ISSUE 1 08/07/2019 (NSY)

CONSUMER NOTICE

The catalogue description and any exhibition of samples are only broad indications of the Products and R&G may make design changes which do not diminish their performance or visual appeal and supplying them in such state shall conform to the order. The Buyer acknowledges no representation or warranty (other than as to title) has been given or will apply to the Products other than those in R&G's order or confirmation and the Buyer confirms it has chosen the Products as being of merchantable quality and suitable for its particular purposes. Where R&G fits the Products or undertakes other services it shall exercise reasonable skill and care and rectify any fault free of charge unless the workmanship has been disturbed. The Buyer is responsible for ensuring that the warranty on the motorcycle is not affected by the fitting of the Products. On return of any defective Products R&G shall at its option either supply a replacement or refund the purchase money but shall not be liable if the Products have been modified or used or maintained otherwise than in accordance with R&G's or manufacturer's instructions and good engineering practice or if the defect arises from accident or neglect. Other than identified above and subject to R&G not limiting its liability for causing death and personal injury, it shall not be liable for indirect or consequential loss and otherwise its liability shall be limited to the amounts paid by the Buyer for the Products or the fitting or service concerned. These terms do not affect the Buyer's statutory rights.

R&G RETURNS POLICY (NON-FAULTY GOODS)

Returns must be pre-authorized (if not pre-authorized the return will be rejected). Goods may only be returned direct to us if they were purchased direct from us (customer must prove if necessary). Otherwise to be returned to original vendor. Goods must be in re-sellable condition, in the opinion of R&G. All returns are subject to a 25% restocking and handling fee (25% of the gross value exc. P&P – at the prevailing price at time of purchase). The customer must pay any and all carriage charges. No returns of discontinued products, unless within 14 days of purchase. This policy does not affect your statutory rights and does not refer to faulty goods.

R&G

Unit 1, Shelley's Lane, East Worldham, Alton, Hampshire, GU34 3AQ
Tel: +44 (0)1420 89007 Fax: +44 (0)1420 87301 www.rg-racing.com Email: info@rg-racing.com



**MONTAGEANLEITUNG FÜR AB0047BK ADVENTURE STURZBÜGEL
KAWASAKI Z125 2019**



**ALLE TEILE SIND UNTEN ABGEBILDET UND GEKENNZEICHNET. BEVOR SIE MIT DER MONTAGE BEGINNEN,
ÜBERPRÜFEN SIE, DASS ALLE TEILE VORHANDEN SIND.**

Hinweis: Die Verpackung der Teile stellt nicht die Reihenfolge der Montage dar.
Hinweis für Kits mit Plastikunterlegscheiben an den Schrauben – *Diese Plastikunterlegscheiben werden nicht für den Einbau benötigt!*

DIE UNTEN ABGEBILDETEN TEILE DIENEN LEDIGLICH ZUR ERKLÄRUNG

**Eine digitale Version dieser Montageanleitung kann auf folgender Seite heruntergeladen werden:
www.rg-racing.com**

ALLGEMEINE ANZUGSDREHMOMENTE:

M4 SCHRAUBE = 8Nm
M5 SCHRAUBE = 12Nm
M6 SCHRAUBE = 15Nm
M8 SCHRAUBE = 20Nm
M10 SCHRAUBE = 40Nm
M10 MUTTER = 40Nm

SIE BENÖTIGEN FOLGENDES WERKZEUG

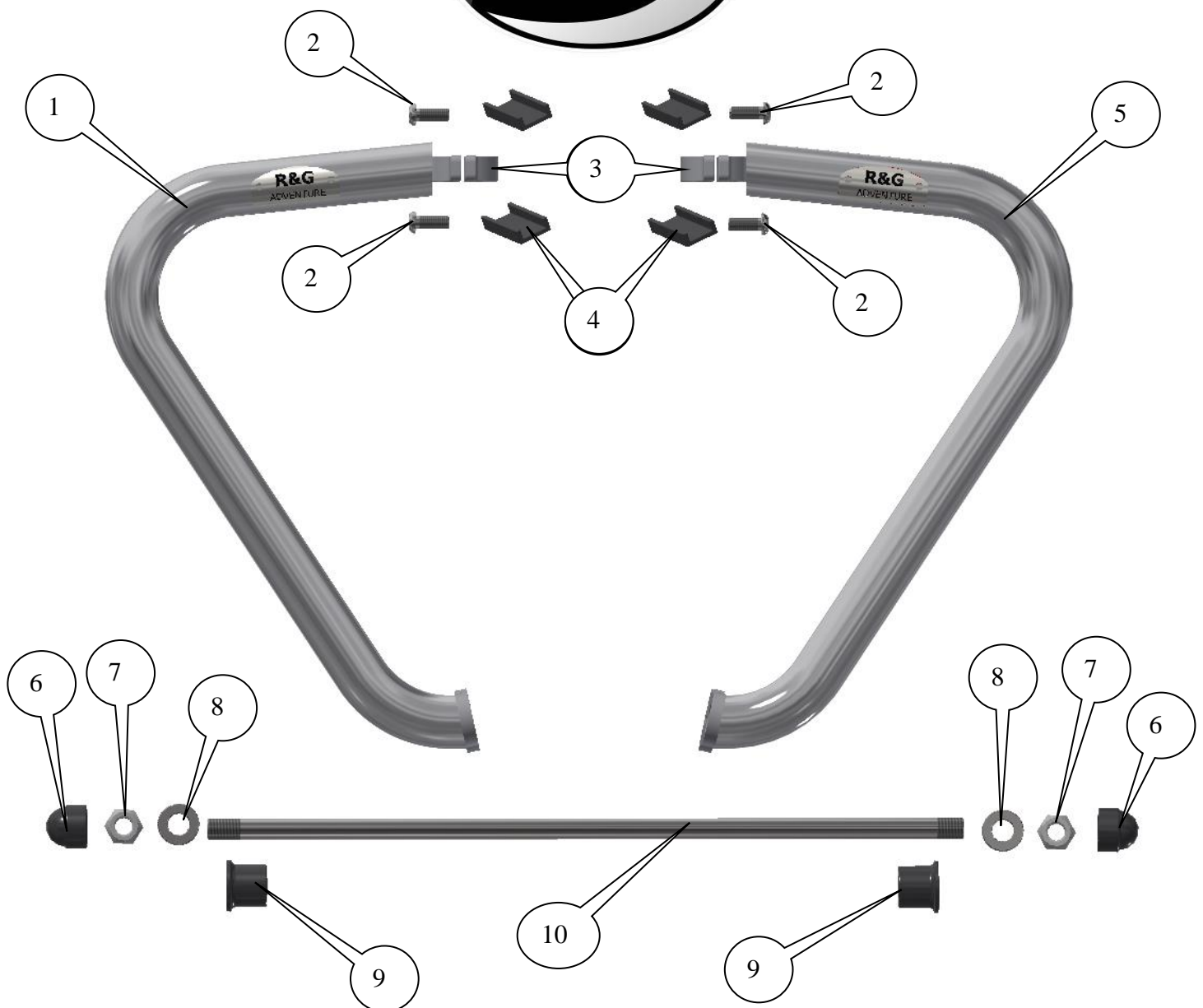
- Steckschlüsselsatz mit 14mm und 17mm Steckschlüssel
 - Satz Inbusschlüssel mit 4mm Inbusschlüssel
 - Drehmomentschlüssel (bis 40Nm)
 - Schonhammer
 - Heber
 - Holzblock
 - etwas Sekundenkleber

R&G

Unit 1, Shelley's Lane, East Worldham, Alton, Hampshire, GU34 3AQ
Tel: +44 (0)1420 89007 Fax: +44 (0)1420 87301 www.rg-racing.com Email: info@rg-racing.com



AB0047



LIEFERUMFANG

ARTIKEL 1 = ADVENTURE STURZBÜGEL – RECHTE SEITE (AB0047 RHS ASSY) (x1)

ARTIKEL 2 = M6x1x15mm INBUSSCHRAUBE (x4)

ARTIKEL 3 = ADVENTURE BAR KLEMME (F0050) (x1)

ARTIKEL 4 = 40mm KANTENSCHUTZ AUS GUMMI (x4)

ARTIKEL 5 = ADVENTURE STURZBÜGEL LINKE SEITE (AB0047 LHS ASSY) (x1)

ARTIKEL 6 = M10 MUTTER ABDECKUNGEN (NC0004) (x2)

ARTIKEL 7 = M10x1,5 SELBSTSICHERNDE MUTTER (x2)

ARTIKEL 8 = M10 UNTERLEGSCHIEBE (x2)

ARTIKEL 9 = DISTANZHALTER FÜR LINKE UND RECHTE SEITE (S1173=519mm LÄNGE)

ARTIKEL 10 = VERBINDUNGSSTANGE (EB097=M10x358mm LÄNGE) (x1)

R&G

Unit 1, Shelley's Lane, East Worldham, Alton, Hampshire, GU34 3AQ

Tel: +44 (0)1420 89007 Fax: +44 (0)1420 87301 www.rg-racing.com Email: info@rg-racing.com



MONTAGEANLEITUNG

- Es empfiehlt sich, den Motor wie in **Abbildung 1** abgebildet zu stützen - somit wird verhindert, dass der Motor sich während der Montage bewegen kann.

Rechte Seite (in Fahrtrichtung)

- Entfernen Sie die Mutter, die in **Abbildung 2** markiert ist mit einem 14mm Steckschlüssel oder Schraubenschlüssel.
- Entfernen Sie die Originalschraube für den Motor (eventuell müssen Sie die neue Verbindungsstange (**Artikel 10**) und einen Schonhammer benutzen, um die Originalschraube rauszuschieben) wie in den Abbildungen 3 und 4 abgebildet (bitte darauf achten, dass die original Distanzhalter für den Motor in Position bleiben) – die Verbindungsstange soll an beiden Seiten des Rahmens gleichmäßig hervorstehen.
- Einen Distanzhalter (**Artikel 9**) an den hervorstehenden Enden der Verbindungsstange anbringen wie in den **Abbildungen 5** und **6** abgebildet.
- Die 4 x Kantenschutz (**Artikel 3**) schneiden und an den Oberflächen der Rahmenklemmen ankleben wie in den **Abbildungen 7** und **8** abgebildet.

Linke Seite (in Fahrtrichtung)

- Den Adventure Sturzbügel für die linke Seite (**Artikel 5**) am offenen Ende der Verbindungsstange an der linken Seite anbringen wie in **Abbildung 9** abgebildet.
- Eine M10 Unterlegscheibe (**Artikel 8**) am offenen Ende der Verbindungsstange anbringen wie in **Abbildung 10** abgebildet.
- Eine M10 Mutter (**Artikel 7**) am offenen Ende der Verbindungsstange anbringen wie in **Abbildung 11** abgebildet (die Mutter komplett einrasten aber zu diesem Zeitpunkt noch nicht festziehen).
- Positionieren Sie eine Klemme (**Artikel 3 mit Artikel 4 in Position angeklebt**) am Rahmen wie in **Abbildung 12** abgebildet.
- Den Adventure Bar Sturzbügel positionieren wie in **Abbildung 13** abgebildet und mit zwei M6 Inbusschrauben (**Artikel 2**) fixieren – zu diesem Zeitpunkt noch nicht festziehen.

Rechte Seite (in Fahrtrichtung)

- Den Adventure Sturzbügel für die rechte Seite (**Artikel 1**) am offenen Ende der Verbindungsstange an der rechten Seite anbringen wie in **Abbildung 14** abgebildet.
- Eine M10 Unterlegscheibe (**Artikel 8**) am offenen Ende der Verbindungsstange anbringen wie in **Abbildung 15** abgebildet.
- Eine M10 Mutter (**Artikel 7**) am offenen Ende der Verbindungsstange anbringen wie in **Abbildung 16** abgebildet (die Mutter komplett einrasten aber zu diesem Zeitpunkt noch nicht festziehen).
- Positionieren Sie eine Klemme (**Artikel 3 mit Artikel 4 in Position angeklebt**) am Rahmen wie in **Abbildung 17** abgebildet.
- Den Adventure Bar Sturzbügel positionieren wie in **Abbildung 13** abgebildet und mit zwei M6 Inbusschrauben (**Artikel 2**) fixieren – zu diesem Zeitpunkt noch nicht festziehen.
- Danach die zwei Muttern für die Verbindungsstange festziehen, dann die vier Inbusschrauben festziehen.
- Montieren Sie die Abdeckungen für die Muttern (**Artikel 6**) an beiden Muttern wie in den Abbildungen **19** und **20** abgebildet.

AUSGABE 1 08/07/2019 (NSY)

R&G

Unit 1, Shelley's Lane, East Worldham, Alton, Hampshire, GU34 3AQ
Tel: +44 (0)1420 89007 Fax: +44 (0)1420 87301 www.rg-racing.com Email: info@rg-racing.com



**NOTICE DE MONTAGE POUR AB0047BK BARRES AVENTURE
KAWASAKI Z125 2019**



Le kit contient les articles exposés ci-dessous, vérifier que toutes les pièces soient présentes avant de procéder au montage.

La façon dont le kit est emballé ne correspond pas forcément à la façon de monter les pièces sur la moto

Notez que si les kits sont emballés avec des rondelles en caoutchouc servant à tenir les composants, *ces rondelles doivent être jetées !*

LES PARTIES PRESENTÉES PEUVENT ETRE UNIQUEMENT REPRESENTATIVES (POUR LA CLARTÉ DES INSTRUCTIONS UNIQUEMENT)

Notice disponible au téléchargement sur www.rg-racing.com

VALEURS DE SERRAGE RECOMMANDEES

M4 BOULON = 8Nm
M5 BOULON = 12Nm
M6 BOULON = 15Nm
M8 BOULON = 20Nm
M10 BOULON = 40Nm
M10 ÉCROU = 40Nm

OUTILS REQUIS

- Clés à cliquet + douilles 14 et 17mm.
- Clés Allen dont une de 4mm.
- Clé dynamométrique (jusqu'à 40Nm).
 - Maillet doux.

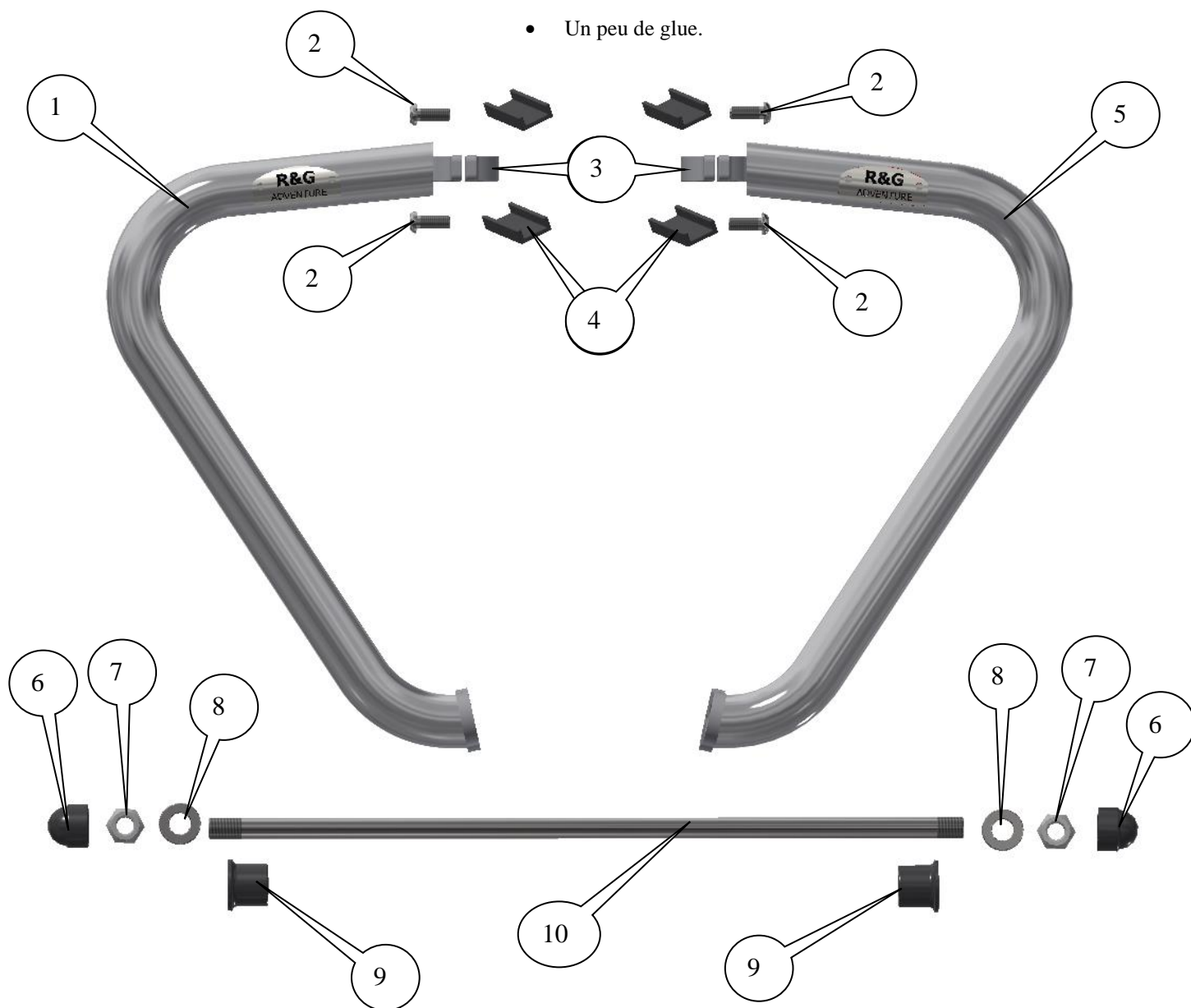
R&G

Unit 1, Shelley's Lane, East Worldham, Alton, Hampshire, GU34 3AQ
Tel: +44 (0)1420 89007 Fax: +44 (0)1420 87301 www.rg-racing.com Email: info@rg-racing.com



AB0047

- Prise de cadre.
- Bloc de bois.
- Un peu de glue.



LÉGENDE

ARTICLE 1 = BARRE AVENTURE – CÔTÉ DROIT (AB0047 RHS ASSY) (x1).

ARTICLE 2 = M6x1x15mm BOULONS (x4).

ARTICLE 3 = PINCE CADRE POUR BARRE AVENTURE (F0050) (x1).

ARTICLE 4 = 40mm LONGUEURS DE CAOUTCHOUC (x4).

ARTICLE 5 = BARRE AVENTURE CÔTÉ GAUCHE (AB0047 ASSEMBLAGE GAUCHE) (x1).

ARTICLE 6 = M10 CACHES ÉCROUS (NC0004) (x2).

ARTICLE 7 = M10x1.5 ÉCROUS (x2).

ARTICLE 8 = M10 RONDELLES (x2).

R&G

Unit 1, Shelley's Lane, East Worldham, Alton, Hampshire, GU34 3AQ

Tel: +44 (0)1420 89007 Fax: +44 (0)1420 87301 www.rg-racing.com Email: info@rg-racing.com



ARTICLE 9 = ENTRETOISES GAUCHE ET DROITE (S1173=519mm DE LONG).

ARTICLE 10 = AXE MOTEUR (EB097=M10x358mm DE LONG) (x1).

NOTICE DE MONTAGE

Il est conseillé de soutenir le moteur comme indiqué sur la photo 1 afin d'empêcher tout mouvement du moteur lorsque le boulon du moteur d'origine est desserré / retiré (Ne forcez pas trop, vous risqueriez de l'endommager).

Côté droit (lorsqu'on est assis sur la moto)

- Retirez l'écrou fléché sur la photo 2 à l'aide d'une douille ou d'une clé à douille de 14 mm.
- Retirez le boulon moteur d'origine (vous devrez peut-être utiliser le nouvel axe moteur (article 10) avec un maillet à surface souple pour faire glisser le boulon d'origine) comme indiqué sur les photos 3 et 4 (veuillez vous assurer que les entretoises du moteur d'origine restent en place), laissez des quantités approximativement égales dépasser de chaque côté du cadre.
- Placez l'une des entretoises (article 9) sur les extrémités apparentes de l'axe moteur, comme indiqué sur les photos 5 et 6.
- Coupez et collez les quatre sections de profilé en caoutchouc (article 3) sur les surfaces de serrage du cadre, comme indiqué sur les photos 7 et 8.

Côté gauche (lorsqu'on est assis sur la moto)

- Placez la barre d'aventure gauche (article 5) sur l'extrémité exposée de l'axe moteur, du côté gauche, comme indiqué sur la photo 9.
- Placez l'une des rondelles M10 (article 8) sur l'extrémité exposée de l'axe moteur, comme indiqué sur la photo 10.
- Placez l'un des écrous M10 (article 7) sur l'extrémité exposée de l'axe moteur, comme indiqué sur la photo 11 (engagez complètement l'écrou mais ne serrez pas à ce stade).
- Placez l'un des étriers (article 3 avec l'article 4 collé en place) sur le cadre, comme indiqué sur la photo 12.
- Positionnez la barre d'aventure comme indiqué sur la photo 13 et fixez-la à l'aide de deux des boulons à tête ronde M6 (article 2). Ne serrez pas complètement à ce stade.

Côté droit (lorsqu'on est assis sur la moto)

- Placez la barre d'aventure côté droit (article 1) sur l'extrémité exposée de l'axe moteur du côté droit, comme indiqué sur la photo 14.
- Placez l'une des rondelles M10 (article 8) sur l'extrémité exposée de l'axe moteur, comme indiqué sur la photo 15.
- Placez l'un des écrous M10 (article 7) sur l'extrémité exposée de l'axe moteur, comme indiqué sur la photo 16 (engagez complètement l'écrou mais ne serrez pas à ce stade).
- Positionnez l'un des étriers (article 3 avec l'article 4 collé en place) sur le cadre, comme indiqué sur la photo 17.
- Positionnez la barre d'aventure comme indiqué sur la photo 13 et fixez-la à l'aide de deux boulons à tête ronde M6 (article 2). Ne serrez pas complètement à ce stade.
- Serrez enfin les deux écrous de l'axe moteur, puis les quatre boulons à tête ronde.
- Monter les caches-écrous (article 6) sur les deux écrous comme indiqué sur les photos 19 et 20.

ISSUE 1 08/07/2019 (NSY)

R&G

Unit 1, Shelley's Lane, East Worldham, Alton, Hampshire, GU34 3AQ
Tel: +44 (0)1420 89007 Fax: +44 (0)1420 87301 www.rg-racing.com Email: info@rg-racing.com



CONSUMER NOTICE

The catalogue description and any exhibition of samples are only broad indications of the Products and R&G may make design changes which do not diminish their performance or visual appeal and supplying them in such state shall conform to the order. The Buyer acknowledges no representation or warranty (other than as to title) has been given or will apply to the Products other than those in R&G's order or confirmation and the Buyer confirms it has chosen the Products as being of merchantable quality and suitable for its particular purposes. Where R&G fits the Products or undertakes other services it shall exercise reasonable skill and care and rectify any fault free of charge unless the workmanship has been disturbed. The Buyer is responsible for ensuring that the warranty on the motorcycle is not affected by the fitting of the Products. On return of any defective Products R&G shall at its option either supply a replacement or refund the purchase money but shall not be liable if the Products have been modified or used or maintained otherwise than in accordance with R&G's or manufacturer's instructions and good engineering practice or if the defect arises from accident or neglect. Other than identified above and subject to R&G not limiting its liability for causing death and personal injury, it shall not be liable for indirect or consequential loss and otherwise its liability shall be limited to the amounts paid by the Buyer for the Products or the fitting or service concerned. These terms do not affect the Buyer's statutory rights.

R&G RETURNS POLICY (NON-FAULTY GOODS)

Returns must be pre-authorized (if not pre-authorized the return will be rejected). Goods may only be returned direct to us if they were purchased direct from us (customer must prove if necessary). Otherwise to be returned to original vendor. Goods must be in re-sellable condition, in the opinion of R&G. All returns are subject to a 25% restocking and handling fee (25% of the gross value exc. P&P – at the prevailing price at time of purchase). The customer must pay any and all carriage charges. No returns of discontinued products, unless within 14 days of purchase. This policy does not affect your statutory rights and does not refer to faulty goods.

R&G

Unit 1, Shelley's Lane, East Worldham, Alton, Hampshire, GU34 3AQ
Tel: +44 (0)1420 89007 Fax: +44 (0)1420 87301 www.rg-racing.com Email: info@rg-racing.com